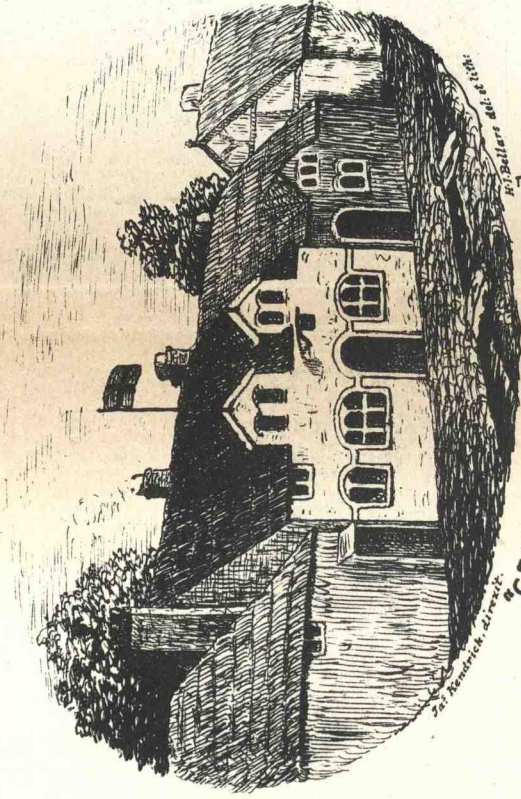


FAC-SIMILE OF AN UNEDITED AUTOGRAPH LETTER OF

OLIVER CROMWELL

WRITTEN AT WARRINGTON, 20TH AUGUST, 1648.

[The Original in the possession of a Gentleman in Liverpool.]



"CROMWELL'S LODGINGS" [1648]

CHURCH STREET, WARRINGTON,

[Where the accompanying Letter was most probably written.]

For the Major the Comdr
at York

ENDORSEMENT OF OLIVER CROMWELL'S LETTER, 20TH AUGUST, 1648.

5. One of Robert Pursglove, a distinguished ecclesiastic, and a native of Tideswell, from Tideswell Church.

By Joseph Mayer, F.S.A. A curious ancient representation of the General Judgment, in Limoges enamel, being part of the collection in his Egyptian Museum.

Also a similar illustration of the Judgment Scene, in the last number of the Journal of the British Archæological Association.

An original letter from Oliver Cromwell, written at Warrington 20th August, 1648.
See illustration.

By Dr. Hume.

A Vulgate Bible, 1519. The woodcuts show two or more successive acts of the persons represented.

A letter was read from Professor Phillips, Assistant-General Secretary of the British Association for the Advancement of Science, announcing the reception, by the General Council in London, of the Memorial from Liverpool, praying the Association to hold its meeting for 1854 in this town.

Mr. Mayer drew attention to the discovery of a Roman Sarcophagus at the Minorities, London, fastened by iron clasps, and containing the body of a female. He also mentioned that he had visited the Castle of Pevensey, where antiquarian researches were going forward under the superintendence of C. Roach Smith, Esq., F.S.A.

PAPERS.

I.—THE MATERIALS FOR THE HISTORY OF THE TWO COUNTIES, AND THE MODE OF USING THEM.

By John Robson, Esq.

The object of the present communication is to review the historic materials which we possess, and the uses which have been, or may be, made of them—in compiling the history of the counties of Lancashire and Cheshire.

These materials consist partly of written records, partly of remains—the handiwork of the inhabitants, and lastly of the languages used by them. But at present we can only offer a very slight sketch of the bearings of these materials upon the geography, ethnology, and history of the district, from the commencement of our era, till the (so-called) departure of the Romans from the island.