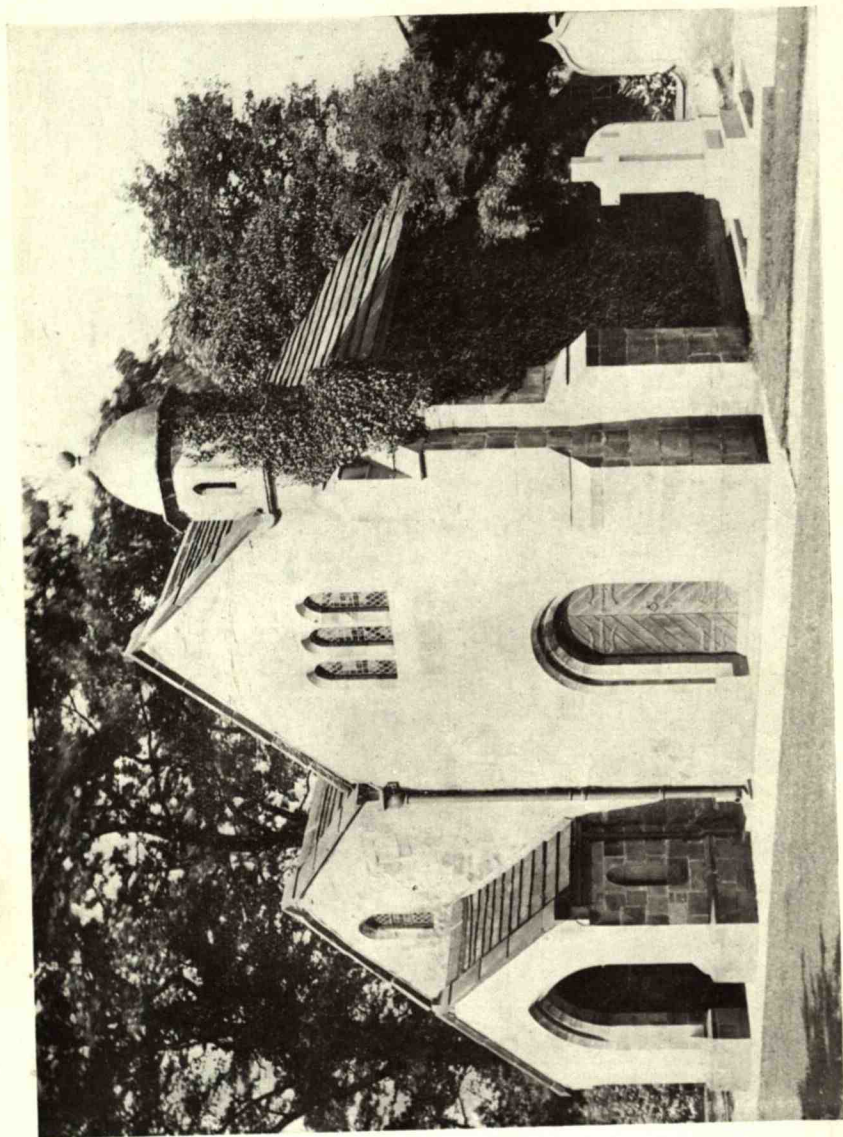


TRANSACTIONS OF THE HISTORIC
SOCIETY OF LANCASHIRE
AND CHESHIRE

VOL. LXXIV.



MAGHULL CHAPEL FROM S.W.

TRANSACTIONS
OF THE
HISTORIC SOCIETY
OF
LANCASHIRE AND CHESHIRE

FOR THE YEAR 1922

VOLUME LXXIV

NEW SERIES—VOLUME XXXVIII



LIVERPOOL
PRINTED FOR THE SOCIETY

1923

TRANSACTIONS
OF THE
ASTOR LENOX AND TILDEN SOCIETY

All rights reserved.

CONTENTS AND ILLUSTRATIONS.

	PAGE
COUNCIL AND OFFICERS FOR THE YEAR 1923	viii.
OFFICERS OF THE SOCIETY FROM THE COMMENCEMENT	ix.
LIST OF HONORARY LOCAL SECRETARIES	xi.
EDITORIAL NOTES	xii.
LIST OF MEMBERS	xiii.
LIST OF SOCIETIES WITH WHICH TRANSACTIONS ARE EXCHANGED	xxii.

PAPERS READ.

MAGHULL CHAPEL. BY F. H. CHEETHAM, F.S.A.	I
Maghull Chapel from S.W.	<i>Frontispiece.</i>
I. THE CHAPEL	2
Plan of the Remains	8
Central pier, looking N.W.	<i>To face</i> 10
Arcade, looking N.E.	" 10
East Window of the North Chapel	" 11
South-east window of Chancel	" 11
West arch of North Chapel from outside and from inside	<i>To face</i> 12
Reconstructed Arch at Manor House	" 13
Original Capital	" 13
Font and Cresset Stone	" 14
Plan of Maghull Chapel, 1755	19
Present Church and remains of Chapel	<i>To face</i> 21
The old Chapel, <i>circa</i> 1820-30	" 21
Seating plan, 1831	24
The Chapel from N.E.	<i>To face</i> 38
II. THE CHAPEL-WARDENS' ACCOUNTS	38
APPENDICES	56

RECTOR WOLSTENHOLME AND HIS MEMORIAL TABLET. BY HENRY PEET, M.A., F.S.A. ..	69
RELIQUIÆ OF ST. PETER'S CHURCH, LIVERPOOL. BY HENRY PEET, M.A., F.S.A.	74
View of the Church <i>To face</i>	74
MANCHESTER CATHEDRAL: THE SCREENS OF THE NAVE CHANTRIES. BY THE REV. H. A. HUDSON, M.A., F.S.A.	83
Western Parclose of St. John Baptist's Chapel <i>To face</i>	85
Portions of old Parcloses, now Ely Chapel ..	88
WIRRAL WATERSHEDS AND RIVER SYSTEMS AND THEIR INFLUENCE ON LOCAL HISTORY. BY E. H. RIDEOUT, B.Sc., A.I.C.	93
Orographical Map of Wirral	92
The Township Boundaries <i>To face</i>	95
Site of Shotwick Castle	96
Plan of Woodchurch Township, 1842	99
The principal Stream Basins of Wirral	102
Wallasey Pool and its Tributaries	105
The Bromborough Pool system	113
ST. CATHERINE PANELS IN ENGLISH ALABASTER AT VIENNA. BY PHILIP NELSON, M.D., F.S.A. ..	128
The Trial of St. Catherine <i>To face</i>	128
Terminals: St. Margaret and St. Apollonia	128
The Burning of the Philosophers	128
St. Catherine in Prison	130
Decollation of St. Catherine	130
EARLY RAILWAYS IN SOUTH-WEST LANCASHIRE. BY W. H. WILLIAMS	132
Model locomotive, showing link motion, 1841 <i>To face</i>	132
James Knox: Henry Booth	138
Group of Early Enginemen	140
Old Railway Offices, Smithdown Lane (two views)	141

Crown Street Passenger Station	<i>To face</i>	141
The Moorish Arch	141
Level Crossing Cottage in Wavertree Lane	142
Opening up Lime Street Tunnel	142
Wapping Tunnel working	145
Plan of line at Warrington, with George Stephenson's alteration	<i>To face</i>	145
The Lichfield Stations, 1849 (two views)	148

COMMUNICATIONS.

THE LATE W. H. RYLANDS, F.S.A.	149
LORD HARINGTON AND CONISHEAD	152
FITTON OBITS. BY R. STEWART-BROWN, M.A., F.S.A.	155
NOTES ON THE BROOKE AND BROCK FAMILIES OF CHESHIRE. BY F. C. BEAZLEY, F.S.A.	158
Pedigree of Brock of Upton	<i>To face</i>	164
" Brooke of Norton	174
" Brooke of Mere	174
STRAY NOTES	175
The Liverpool Registers.—Horrocks of Toxteth.— Rev. Joseph Tompson.—Tolls on Warrington Bridge.—A Civil War Incident.—Pilling Chapel, —John Jacques, clerk.—Offences in Shotwick Park.—The Wallasey Oxfangs.—Imitation Sorcery.—Charter by William Malbank II.— Cheshire Sheriffs.—Raven of Elworth.		
REPORTS AND TREASURER'S ACCOUNT	181
INDEX	185
INDEX TO VOLS. LXII (1910) TO LXXI (1919)	198

Council and Officers for the Year 1923.

President.

THE RIGHT HON. THE EARL OF DERBY, K.G., G.C.V.O., P.C.

Vice-Presidents.

JOHN PAUL RYLANDS, F.S.A.
WM. FERGUSSON IRVINE, M.A., F.S.A.
F. C. BEAZLEY, F.S.A.
HENRY PEET, M.A., F.S.A.
A. H. ARKLE, O.B.E.
F. C. LARKIN, F.R.C.S.
R. STEWART-BROWN, M.A., F.S.A.

Members of Council.

TO SERVE TO END OF 1923.

R. GLADSTONE, B.C.L., M.A. J. A. TWEMLOW, B.A.
HAROLD LEE, J.P. W. FORSHAW WILSON.

TO SERVE TO END OF 1924.

F. E. AUBREY, L.D.S. S. W. PHIPPS.
F. H. CROSSLEY, F.S.A. E. H. RIDEOUT, B.Sc., A.I.C.

TO SERVE TO END OF 1925.

R. CATON, M.D. F.R.C.P. FRANCIS J. WELD.
WALTER PEEL, C.B.E. E. CUTHBERT WOODS, L.D.S.
GEORGE T. SHAW.

Hon. Treasurer.

P. C. BROWN, 20 PENKETT ROAD, WALLASEY, CHESHIRE.

Hon. Librarian.

R. I. BAILEY, M.B.E., M.R.C.S.,
L.R.C.P.

Hon. Assistant Librarian.

E. H. RIDEOUT, B.Sc., A.I.C.

Hon. Secretary.

PHILIP NELSON, M.D., F.S.A.,
"BEECHWOOD," CALDERSTONES,
LIVERPOOL.

Hon. Assistant Secretary.

JAMES A. WAITE.

Hon. Editor.

JOHN BROWNBILL, M.A.

Excursion Committee.

F. E. AUBREY, L.D.S. F. C. LARKIN, F.R.C.S.
Dr. S. SAXON BARTON, O.B.E., F.S.A.Scot.

Photographic Committee.

R. T. BAILEY, M.B.E., M.R.C.S., JAMES A. WAITE.
L.R.C.P.

Officers of the Society from Commencement.

Presidents.

1.	Right Hon. Francis, 1st Earl of Ellesmere, Lord-Lieutenant of Lancashire	1848
2.	Right Hon. Charles William, 3rd Earl of Sefton, Lord-Lieutenant of Lancashire	1854
3.	General the Hon. Sir Edward Cust, K.C.H., D.C.L.	1855
4.	Right Hon. William Ewart Gladstone, M.P.	1863
5.	Joseph Mayer, F.S.A., &c.	1866
6.	Rev. Canon Hume, D.C.L., LL.D., &c.	1869
7.	The Very Rev. J. S. Howson, D.D., Dean of Chester	1875
8.	Thomas Glazebrook Rylands, F.S.A., &c.	1879
9.	Right Rev. The Lord Bishop of Oxford, F.S.A.	1885
10.	Right Rev. The Lord Bishop of Chester, D.D.	1889
11.	Right Hon. Arthur, 16th Earl of Derby, K.G., G.C.B., Lord-Lieutenant of Lancashire	1903
12.	RIGHT HON. EDWARD, 17TH EARL OF DERBY, K.G., G.C.V.O., C.B.	1908

Secretaries.

1848.	Rev A. Hume, LL.D., and H. C. Pidgeon.
1851.	Rev. A. Hume, LL.D., and Rev. Thomas Moore, M.A.
1854.	Rev. A. Hume, LL.D.

Assistant Secretaries.

1855.	Rev. A. Hume, LL.D.	Thomas G. Wedgwood.
1856.	Rev. A. Hume, LL.D.	W. W. Rundell.
1857.	Rev. A. Hume, LL.D.	J. H. Genn.
1864.	Nicholas Waterhouse.	J. H. Genn.
1867.	David Buxton.	Charles Dyall
1875.	David Buxton.	Arthur Wakefield.
1876.	David Buxton.	Eugenio Londini.
1877.	C. T. Gatty, F.S.A.	Eugenio Londini.
1882.	C. T. Gatty, F.S.A.	T. N. Morton.
1884.	E. M. Hance, LL.B.	T. N. Morton.
	R. D. Radcliffe, M.A.	
1888.	R. D. Radcliffe, M.A., F.S.A.	T. N. Morton.
1892.	R. D. Radcliffe, M.A., F.S.A.	T. N. Morton, W. F. Irvine.
1898.	R. D. Radcliffe, M.A., F.S.A.	W. F. Irvine, Jas. A. Waite.
1903.	W. F. Irvine, M.A., F.S.A.	Jas. A. Waite.
1910.	F. C. Beazley, F.S.A.	Jas. A. Waite.
1914.	PHILIP NELSON, M.D., F.S.A.	JAS. A. WAITE.

Editor.

1911. John Brownbill, M.A.¹

Treasurers.

1848.	Thomas Avison, F.S.A.	1898.	W. E. Gregson.
1860.	William Burke.	1905.	F. C. Beazley, F.S.A.
1867.	John G. Jacob.	1911.	S. W. Phipps.
1886.	H. D. Eshelby, F.S.A.	1922.	P. C. BROWN.

¹ Before this date the Secretary was also Editor.

*Officers of the Society from Commencement.**Librarians.*

1848. Joseph Mayer, F.S.A.
 1851. Rev. Thomas Moore, M.A.
 1859. David Buxton.
 1867. Nicholas Waterhouse.
 1869. Nicholas Waterhouse.
 1871. John R. Hughes.
 1875. John R. Hughes.
 1876. C. T. Gatty, F.S.A.
 1877. E. M. Hance, LL.B.
 1880. *(Offices in abeyance).*
 1885. W. Thompson Watkin.
 1886. W. Thompson Watkin.
 1889. George T. Shaw.
 1889. George T. Shaw.
 1899. George T. Shaw.
 1911. George T. Shaw.
 1915. R. T. BAILEY, M.B.E., M.R.C.S., L.R.C.P.

Curators.

- Joseph Mayer, F.S.A.
 Joseph Mayer, F.S.A.
 A. C. Gibson, F.S.A.
 A. C. Gibson, F.S.A.
 H. Ecroyd Smith.
 H. Ecroyd Smith.
 J. Harris Gibson.
 J. Harris Gibson.
 J. Harris Gibson.
 J. Harris Gibson.
 J. Harris Gibson.
 J. Harris Gibson.
 J. Harris Gibson.
 J. Harris Gibson.
 W. Forshaw Wilson.
 W. C. Ashby Pritt.
 Charles Potter.
 W. F. Price.

Assistant Librarians.

1911. James A. Waite.
 1922. E. H. RIDEOUT, B.Sc., A.I.C.

List of Honorary Local Secretaries.

DISTRICT.	NAME.
<i>Burnley</i>	W. FARRER, D.Litt., Whitbarrow Lodge, Grange-over-Sands.
<i>Leigh</i>	W. D. PINK, Public Library, Leigh.
<i>Leyland</i>	The Rev. W. STUART WHITE, Healey Vicarage, Rochdale.
<i>Ormskirk</i>	JAMES BROMLEY, J.P., The Homestead, Lathom.
<i>Rainford</i>	The Rev. Canon J. WRIGHT WILLIAMS, Farnworth.
<i>Sefton</i>	W. E. GREGSON, 43 Moor Lane, Great Crosby.
<i>Whalley and endle Hill</i> }	W. SELF WEEKS, Westwood, Clitheroe.
<i>Wigan</i>	Sir T. R. RATCLIFFE-ELLIS, 18 King Street, Wigan.
<i>Wray, near Lancaster</i>	Rev. C. L. REYNOLDS, M.A., Wray Vicarage, Lancaster.
<i>Darwen and Blackburn</i> }	J. POMFRET, Public Library, Darwen.

. The Council would be glad to hear from Gentlemen, not necessarily members of the Society, willing to volunteer as Hon. Local Secretaries for Districts in Lancashire and Cheshire not already provided for.

EDITORIAL NOTES.

The authors of Papers are alone responsible for the statements and opinions in their several communications.

Dr. Nelson has lent one of the blocks illustrating his paper.

The present volume has been prepared for the press by J. BROWNBILL, M.A., Honorary Editor.

ERRATUM.

Page 38, line 4.—For “ 1753 ” read “ 1743.”

N.B.—It is requested that notice be given to the Secretary of any errors, change of address, or death.

LIST OF MEMBERS

(Corrected to 1st January, 1923).

The names of Life Members are printed in BLACK TYPE.

DATE OF ELECTION.

1889. April 4. Abraham, Miss E. C. Riverham, Grassendale Park, Liverpool.
1908. Mar. 5. Accrington Public Library, Accrington.
1910. Nov. 10. Anderton, Henry Ince. Hôtel des Trois Couronnes, Vevey, Switzerland.
1903. Jan. 15. Arkle, A. H., O.B.E. Elmhurst, Oxton, Birkenhead, *Vice-President*.
1888. Mar. 22. Athenæum Library. Liverpool.
1899. Jan. 19. Atkinson, W. J. A. Hillside, Gateacre.
1907. Sept. 16. Aubrey, F. E., L.D.S. R.C.S.Eng. 13 Upper Duke Street, Liverpool. *Excursion Committee*.
1890. Jan. 23. Ayrton, William. 10 Dale Street, Liverpool.
1904. Jan. 14. Bailey, R. T., M.B.E., M.R.C.S., L.R.C.P. 51 Grove Street, Liverpool. *Hon. Librarian*.
1918. Jan. 1. Baker, Harold R. P., M.R.C.S., L.R.C.P. 77 Accrington Road, Blackburn.
1886. Nov. 18. Banner, Sir John S. Harmood, M.P. Aston Hall, Preston Brook, Cheshire.
1912. Jan. 18. Barlow, Miss A. L. 70 West Bank Road, Birkenhead.
1907. Feb. 21. Barrow-in-Furness, Free Library of.
1914. Jan. 29. Barton, S. Saxon, Jun., O.B.E., F.S.A.Scot., L.R.C.P.Edin., F.R.F.P.S. The Beach, Southwood Road, St. Michael's Hamlet, Liverpool.
1914. Jan. 1. Beazley, Eric B. Oak Dene, Noctorum, Birkenhead.
1899. Feb. 16. Beazley, Frank C., F.S.A. 46 Grosvenor Road, Claughton, Birkenhead. *Vice-President*.
1921. Oct. 27. Bell, G. K. Hillock Cottage, Parbold.
1915. Jan. 28. Benas, Bertram B. B., B.A., LL.B. 5 Princes Avenue, Liverpool.

DATE OF ELECTION.

1913. Oct. 30. Bennett, J. H. E. Cambrian Crescent, Chester.
 1918. Oct. 31. Bickerton, H. R., M.A., M.R.C.S., L.R.C.P. 88
 Rodney Street, Liverpool.
 1905. Nov. 2. Bickerton, T. H., M.R.C.S. 88 Rodney Street,
 Liverpool.
 1896. Jan. 16. Birkenhead Free Public Library. Birkenhead.
 1889. Oct. 31. Birmingham Central Free Library. Ratcliff
 Place, Birmingham.
 1870. April 7. Blackburn Free Library. Blackburn.
 1922. Jan. 7. Blackledge, W.T., M.B.E., M.B., C.M. 2 Somers-
 set Place, Newsham Park, Liverpool.
 1921. Nov. 10. Blundell, Rev. Frederick, O.S.B., F.S.A.Scot.
 St. Anne's Priory, Edge Hill, Liverpool.
 1888. Mar. 22. Bodleian Library. Oxford.
 1907. Jan. 5. Bolton-le-Moors, Free Public Library of.
 1890. Nov. 6. Bootle Free Library. Oriel Road, Bootle.
 1888. Mar. 22. Boston Athenæum. Boston, Mass., U.S.A. (C/o
 Messrs. E. G. Allen & Son, Ltd., 14 Grape
 Street, Shaftesbury Avenue, London, W.C.2).
 1889. Jan. 10. Boston Public Library. Boston, U.S.A. (C/o B.
 Quaritch, Ltd., 11 Grafton Street, London, W.1).
 1912. Dec. 19. Bradford Public Library. Bradford.
 1891. Nov. 5. British Museum Library. (C/o Messrs. B. F.
 Stevens & Brown, 4 Trafalgar Square, London,
 W.C.2).
 1901. Nov. 7. Bromilow, Henry John. Green Bank, Rainhill.
 1914. Jan. 1. Brown, Percy C. 20 Penkett Road, Wallasey.
Hon. Treasurer.
 1905. May 8. Brownbill, John, M.A. 7 Millman Street,
 London, W.C.1. *Hon. Editor.*
 1914. Oct. 29. Bunbury, H. J. C/o Boodles, St. James' Street,
 London, S.W.1.
 1910. Feb. 17. Burnett, Miss Eleanor. Devonshire House,
 Devonshire Park, Birkenhead.
 1909. Jan. 21. Burnett, Miss M. Edith. Devonshire House,
 Devonshire Park, Birkenhead.
 1921. Jan. 20. Caldwell, Francis, C.B.E., M.V.O. 11 Devon-
 shire Road, Princes Park, Liverpool.
 1889. Feb. 21. Caton, Richard, C.B.E., M.D., LL.D., J.P. 3
 Livingston Drive South, Sefton Park, Liverpool
 1922. Jan. 19. Cheetham, F. H., F.S.A. 47 Walnut Street,
 Southport.

DATE OF ELECTION.

1879. Jan. 9. Chetham's Library, Manchester.
1922. April 4. Chicago University. (C/o Messrs. B. F. Stevens & Brown, 4 Trafalgar Square, London, W.C.2).
1900. Mar. 29. Chorley Free Public Library. Chorley.
1905. April 11. Congress, Library of. Washington, U.S.A. (Per Edward G. Allen & Son, Ltd., 14 Grape Street, Shaftesbury Avenue, London, W.C.2).
1902. Nov. 6. Coventry, Harold. 19 Claremont Road, West Kirby.
1915. Feb. 25. Crossley, Frederick H., F.S.A., F.R.I.A. 19 Shavington Avenue, Hoole, Chester.
1921. Dec. 8. Crowden, George Wm. 3 Menlove Avenue, Mossley Hill, Liverpool.
1906. Mar. 1. Danson, Sir F. C., F.S.A. 74 Bidston Road, Oxtun, Birkenhead.
1907. July 15. Darwen Free Library. Darwen.
1895. Nov. 7. De Hoghton, Sir James, Bart. Hoghton Tower, Preston.
1918. Oct. 31. Duveen, James H. Tyn Dwfr Hall, Llangollen.
1922. Jan. 29. Elias, F. C. Holt House, North Road, Grassendale Park, Liverpool.
1920. Feb. 12. Ellis, S. 9 Strand Street, Liverpool.
1901. Feb. 14. Ellsworth, W. S. 11 Park Crescent, Southport.
1910. Mar. 3. Elwell, Rev. H. E., M.A. Capenhurst Rectory, Chester.
1919. Jan. 1. Entwistle, Peter. The Public Museum, Liverpool.
1914. Oct. 29. Eschwege, Maurice. 47 Lime Street, Liverpool.
1920. Jan. 29. Ford-Jones, John. 35 Rocky Lane, Liverpool.
1875. Jan. 7. **Garnett, William.** Quernmore Park, Lancaster.
1907. April 22. Gladstone, Henry Neville. Hawarden Castle, Flint.
1902. Nov. 6. **Gladstone, Robert, B.C.L., M.A.** Athenæum, Liverpool.
1921. Jan. 20. Haigh, Edwin, C. C. San Roque, Calderstones, Liverpool.
1906. Feb. 14. Hall, Lawrence. 6 Canning Street, Liverpool.
1912. Jan. 18. Hand, Chas. R. Ivydene, Ashfield, Wavertree, Liverpool.
1890. Nov. 6. Hannay, A. M. 5 India Buildings, Water Street, Liverpool.
1908. Jan. 13. Hargreaves, John. 64 Dacre Hill, Rock Ferry.

DATE OF ELECTION.

1912. Nov. 21. Harvard College Library. (Per E. G. Allen and Son, Ltd., 14 Grape Street, Shaftesbury Avenue, London, W.C.2).
1916. Jan. 27. Heal, Albert H. Plymyard Manor, Eastham, Cheshire.
1911. Oct. 25. Hignett, Theophilus. St. Ives, Sandfield Park, West Derby, Liverpool.
1910. Feb. 3. Hind, Miss Alice. 27 Beech Road, Birkenhead.
1918. Jan. 31. Holt, Miss M. Fern Hill, New Brighton.
1913. Oct. 30. Hughes, John. 280 Kensington, Liverpool.
1919. Oct. 30. Humphreys, Dr. Richard, M.B., C.M. 1 Cressington Park, Liverpool.
1891. Nov. 5. Ireland, National Library of. (C/o Messrs. Hodges, Figgis & Co., Ltd., 20 Nassau Street, Dublin.)
1890. Nov. 6. Irvine, Wm. Fergusson, M.A., F.S.A. 56 Park Road South, Birkenhead. *Vice-President.*
1910. Nov. 10. John Rylands Library. Manchester.
1918. Feb. 28. Johnson, Joseph B. Devonshire House, Devonshire Road, Princes Park, Liverpool.
1922. Nov. 5. Jones, W. Garmon, M.A. Elm House, Ashville Road, Birkenhead.
1897. Nov. 4. Lancaster Free Public Library. Lancaster.
1901. Jan. 17. Larkin, F. C., F.R.C.S. 77 Bedford Street, Liverpool. *Vice-President.*
1913. Oct. 30. Lawson, P. H. 6 Shavington Avenue, Chester.
1911. Jan. 19. Lee, Harold, J.P. 15 North John Street, Liverpool.
1889. Mar. 7. Leeds Free Public Library. Leeds.
1903. Dec. 17. Legge, Charles J. 3 Grosvenor Place, Claughton, Birkenhead.
1916. Jan. 1. Leigh-Mallory, Rev. Herbert L., M.A. St. John's Vicarage, Slatey Road, Birkenhead.
1911. Oct. 25. Leigh Public Library. Leigh, Lancashire.
1892. Feb. 25. Leverhulme, Right Honourable Lord. Thornton Manor, Thornton Hough, Cheshire.
1920. Oct. 28. Linaker, R. Hyde. Hazelmere, Weston Road, Runcorn, Cheshire.
1904. Jan. 28. Liverpool Free Library. Liverpool.
1902. Jan. 16. Liverpool Library (Lyceum). Bold Street, Liverpool.

List of Members.

xvii.

DATE OF ELECTION.

1893. Nov. 2. Livesey, John. Barham, Wray Park Road, Reigate, Surrey.
1921. Feb. 24. Livsey, Arthur C., A.M.I.E.E. Three Trees, Woodland Park, Prestatyn, Flintshire.
1919. Jan. 1. Logan, John R. 81 Hartington Road, Liverpool.
1911. Oct. 25. Lyell, George I. 10 Vernon Street, Liverpool.
1914. Oct. 29. McCormack, Chas. V., M.R.C.S., L.R.C.P. 58 Merton Road, Bootle.
1888. Mar. 22. Manchester Free Reference Library. Piccadilly, Manchester.
1888. Mar. 22. Manchester University Library. Manchester.
1916. Oct. 28. Marshall Rev. W., M.A. Sarnesfield Court, Weobley, R.S.O., Herefordshire.
1920. Feb. 26. Matthews, Godfrey W. 23 Holland Road, Wallasey.
1922. Dec. 28. Mawer, W. Allen., M.A. 19 Marmion Road, Liverpool.
1914. Jan. 1. May, Walter T. 20 Huskisson Street, Liverpool.
1904. Mar. 25. Mayer Free Library. Bebington, nr. Birkenhead.
1890. Nov. 6. Meade-King, Richard R. Sandfield Park, West Derby, Liverpool.
1915. Jan. 28. Morton, Mrs. 124 Prenton Road West, Birkenhead.
1922. Feb. 2. Morton, Miss M. 124 Prenton Road West, Birkenhead.
1908. Dec. 10. Nelson, Philip, M.D., F.S.A., F.R.A.I. Beechwood, Calderstones, Liverpool. *Hon. Secretary.*
1897. Mar. 25. New York, Public Library of. New York, U.S.A. (C/o B. F. Stevens and Brown, 4 Trafalgar Square, London, W.C.2).
1893. Feb. 9. Newberry Library. Chicago, U.S.A. (Per B. F. Stevens and Brown, 4 Trafalgar Square, London, W.C.2.)
1919. Oct. 30. Nicholson, Alex. C., F.G.S. 45 Ferndale Road, Hoylake.
1921. Feb. 24. Norris, George R. 5 Livingstone Drive, Liverpool.
1911. Feb. 2. Nottingham Free Public Library. Nottingham.
1907. July 15. Oldham Free Library. Oldham.
1907. Mar. 21. Owen, Segar, F.R.I.B.A. Kelmscott, Appleton, Cheshire.
1891. Dec. 17. Parker, Colonel John W. R., C.B., F.S.A. Browsable Hall, Clitheroe.

DATE OF ELECTION.

1910. April 21. Paterson, David. Vailima, Queen's Drive, Mossley Hill, Liverpool.
1913. Oct. 30. Peabody Institute, The. Baltimore, U.S.A. (Per E. G. Allen & Son, Ltd., 12/14 Grape Street, Shaftesbury Avenue, London, W.C.2).
1916. Oct. 28. Peel, W. The Shrublands, Hoole. Chester.
1890. Nov. 6. Peet, Henry, M.A., F.S.A., J.P. Manor Cottage, Cavendish Road, Birkenhead. *Vice-President*.
1921. Oct. 27. Pelling, Douglas L. 4 Curzon Road, Prenton.
1894. Nov. 1. Phipps, S. W. Maple Lodge, London Road, Shrewsbury.
1921. Jan. 20. Priestley, Frank C. Fieldhead, Prenton.
1911. Jan. 19. Public Record Office, London. (Per H.M. Stationery Office, Princes Street, Westminster, London, S.W.1).
1888. Feb. 9. Radcliffe, Sir Frederick M. 55 Victoria Street, Liverpool.
1891. Jan. 22. Ratcliffe-Ellis, Sir Thomas R. 18 King Street, Wigan.
1914. Oct. 29. Reynolds, Lieut.-Colonel Sir J. P., Bart., D.S.O., J.P., D.L. Dove Park, Woolton.
1921. Feb. 10. Rideout, Eric H., B.Sc., A.I.C. 17 Regent Road, Wallasey. *Hon Assistant Librarian*.
1918. Feb. 14. Robertson, Allan. 43 Exchange Buildings, Liverpool.
1901. April 13. Rochdale Free Public Library. Rochdale.
1903. Dec. 3. **Royden, E. B.** Bidston Court, Birkenhead.
1917. Jan. 25. Royds, Lady. 71 Eaton Place, London, S.W.
1870. Nov. 3. Rylands, John Paul, F.S.A. 96 Bidston Road, Birkenhead. *Vice-President*.
1888. Mar. 22. St. Helens Free Public Library. St. Helens.
1907. July 15. Salford Royal Museum and Libraries. Peel Park, Salford.
1888. Nov. 15. **Sandeman, Lieut.-Col. John Glas, M.V.O.**, Sub-Officer H.M. Hon. Corps of Gentlemen at Arms. Whin-Hurst, Hayling Island, Havant.
1888. Mar. 8. Shaw, G. T. Liverpool Free Library, Liverpool.
1920. Jan. 1. Sheppard, Percy G., L.M.S., L.S.A. 59 Edge Lane, Liverpool.
1897. Jan. 28. Southport (Atkinson) Free Public Library. Southport.

DATE OF ELECTION.

1899. April 13. Starkie, Colonel Edmund A. Le Gendre. Hunt-royde, Burnley.
1918. Feb. 14. Steele, E. W. Topham. 78, Shrewsbury Road, Oxton.
1905. Feb. 23. Stewart-Brown, R., M.A., F.S.A. Bryn-y-grôg Marchwiell, Wrexham. *Vice-President*.
1911. Jan. 19. Stockport Public Library. Stockport.
1906. Feb. 15. Stone, Park N. The Moorings, Neston.
1891. Nov. 5. Stonyhurst College, Rev. the Rector of, S. J. Blackburn.
1919. Oct. 30. Stott, Dr. J. Edwin, L.R.C.P., L.R.C.S. 201 Edge Lane, Liverpool.
1912. Feb. 29. Strype, Chas. F. 61 Greenbank Road, Devonshire Park, Birkenhead.
1920. Oct. 28. Teare, W. Rimmer. 12 Bentley Road, Cxton, Birkenhead.
1887. Feb. 10. **Tempest, Mrs. Arthur Cecil.** Hobgreen, Mar-kington, via Harrogate.
1889. Feb. 21. Thompson, Edward P. Whitchurch, Salop.
1911. Jan. 19. Timbrell, Rev. W. F. J., M.A. Coddington Rectory, Chester.
1890. Nov. 6. Tonge, William Asheton. The Old Rectory, Warburton, Cheshire.
1908. Aug. 22. Toronto Reference Library, Toronto, Canada. (C/o W. H. Smith & Son, Strand House, London, W.C.2).
1888. Feb. 23. Toulmin & Sons, Ltd., George. *Lancashire Daily Post* Office, Preston.
1889. Oct. 31. Turton, Fletcher Thomas. Hazel Bank, Huyton, Liverpool.
1920. Jan. 1. Twemlow, J. A., B.A. 64 Upper Parliament Street, Liverpool.
1919. Jan. 1. Veitch, Geo. S., M.A., Litt.D. Pelham House, Sandown Park, Wavertree, Liverpool.
1903. Mar. 12. Victoria and Albert Museum Library. South Kensington, London, S.W. (Per Board of Education, Storekeeper's Department, South Kensington).
1894. Nov. 1. Waite, Jas. A. 6 Fairfield Street, Fairfield, Liverpool. *Hon. Assistant Secretary*.
1913. Nov. 27. Wales, National Library of. Aberystwyth.
1918. Jan. 1. Wallasey Public Libraries. Wallasey, Cheshire.

DATE OF ELECTION.

1894. April 5. Warburton, Rev. William, M.A. The Vicarage, Hoylake, Cheshire.
1921. Oct. 27. Wardman, R. The Beeches, Massie Street, Cheadle.
1892. Nov. 3. Warrington Museum. Warrington.
1921. Mar. 10. Watson, A. E., L.D.S. R.C.S. Ed. 135 Upper Parliament Street, Liverpool.
1897. Nov. 4. **Wearing, J. W., M.A.** Parkfield, Lancaster.
1918. Oct. 31. Webster, Rev. G. E., M.A. Tredington Village, Tewkesbury.
1918. Jan. 31. Weld, Francis. Weld Road, Birkdale, Southport.
1921. Mar. 24. White, Thomas. Junior Reform Club, Stanley Street, Liverpool.
1889. Jan. 10. Wigan Free Public Library. Wigan.
1906. Mar. 31. Wilkinson, W. 17 Church Road, Lytham.
1907. Oct. 10. Williams, R. Warner. Constitutional Club, 1 Beresford Road, Birkenhead.
1913. Oct. 30. Williams, Wm. H. 41 Laburnum Road, Fairfield, Liverpool.
1885. Nov. 26. Wilson, W. Forshaw. 50 Cable Road, Hoylake.
1915. Jan. 1. Winstanley, Herbert. Easby, Mersey Road, Aigburth, Liverpool.
1913. Oct. 30. Wisconsin State Historical Society. Madison, Wisconsin, U.S.A. (Per G. E. Stechert & Co., 2 Star Yard, Carey Street, Chancery Lane, London, W.C.)
1905. Mar. 9. Withers, R. E. M. 13 Haymans Green, West Derby, Liverpool.
1904. Jan. 28. Wolstenholme, Chas. M. 71 Park Road South, Birkenhead.
1891. Nov. 19. **Woodhouse, Miss E. D.** Burghill Court, Hereford.
1909. Feb. 12. Woods, E. C., L.D.S. R.C.S. (Eng.) 76 Mount Pleasant, Liverpool.
1920. Jan. 29. Woods, E. C., Mrs. 76 Mount Pleasant, Liverpool.

HONORARY MEMBERS.

DATE OF ELECTION.

1914. Mar. 26. Boyd-Dawkins, W., M.A., D.Sc., F.R.S., F.G.S.,
F.S.A. Fallowfield House, Fallowfield, Man-
chester.
- “ “ Carlyon-Britton, P. W. P., J.P., D.L., F.S.A.,
P.B.N.S. “ Eversfield,” Fishbourne, nr. Chi-
chester.
- “ “ Evans, Sir Arthur, M.A., D.Litt., F.R.S., P.S.A.,
Youlbury, Berkshire.
- “ “ Green, Everard, F.S.A. Somerset Herald. College
of Arms, Queen Victoria Street, London, E.C.
- “ “ James, Montagu R., D.Litt., F.S.A. Eton College,
Eton.
- “ “ Lyte, Sir Henry C. Maxwell, K.C.B., M.A. 61
Warwick Square, London, S.W.
- “ “ Prior, E. S., M.A., A.R.A., F.S.A. Fairview,
Shaftesbury Road, Cambridge.
- “ “ Read, Sir C. Hercules, LL.D., V.P.S.A. British
Museum, London, W.C.
1920. — Lethaby, Prof. W. R., F.S.A. 111 Inverness
Terrace, London, W.2.
- “ — Biver, Count Paul. Jouy-en-Josas, Seine-et-Oise,
France.

SOCIETIES WHICH EXCHANGE TRANSACTIONS WITH
THE HISTORIC SOCIETY OF LANCASHIRE
AND CHESHIRE.

Society of Antiquaries of London.
Society of Antiquaries of Scotland.
Royal Society of Antiquaries of Ireland.
New England Historical and Genealogical Society.
Bristol and Gloucestershire Archæological Society.
Cambridge Antiquarian Society.
Chester Archæological Society.
Cumberland and Westmorland Antiquarian Society.
Exeter Diocesan Architectural and Archæological Society.
Kent Archæological Society.
Lancashire and Cheshire Antiquarian Society.
Leicestershire Archæological Society.
Architectural and Archæological Society of Lincoln and Notts.
London and Middlesex Archæological Society.
Society of Antiquaries of Newcastle-on-Tyne.
Shropshire Archæological and Natural History Society.
Somersetshire Archæological and Natural History Society.
Suffolk Institute of Archæology and Natural History.
Sussex Archæological Society.
Thoresby Society, Leeds.
Yorkshire Archæological Society.

THE HISTORIC SOCIETY SUBSCRIBES TO THE FOLLOWING:

Congress of Archæological Societies.
Lancashire Parish Register Society.
Lancashire and Cheshire Record Society.