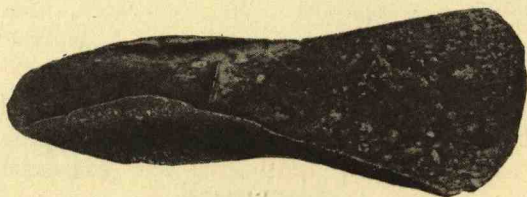
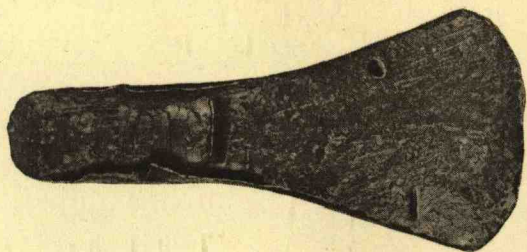


REVERSE



SIDE



OBVERSE

THE LISCARD PALSTAVE
(Half the size of the Original)

THE LISCARD PALSTAVE

THE bronze palstave or winged celt which was exhibited at the Society's meeting on 18th January 1912, was found in September 1901 in Zig-Zag Road, Liscard, by a workman employed in cutting a drain. It lay about 3 feet below the surface, upon a thin, hard bed or crust of black substance (possibly a hearth of wood ash), with sand both above and below. The finder took it, as old metal, to Mr. Joseph Kitchingman, who at once purchased it. The weight is $10\frac{1}{2}$ ounces, and the measurements are: Length in all, $5\frac{3}{16}$ inches ($3\frac{1}{16}$ from edge to stop-ridge); breadth of blade, $2\frac{3}{4}$ inches (1 inch at flange); and breadth of wings, $\frac{7}{8}$ inch. The surface bears evidence of the manner of usage in the curving scratches or lines scored upon the blade and in the bent and damaged state of the reverse flanges on the lower side. Mr. Kitchingman has kindly lent his block for the accompanying illustration; it shows the two faces and side of this interesting relic of the ancient inhabitants of Liscard.