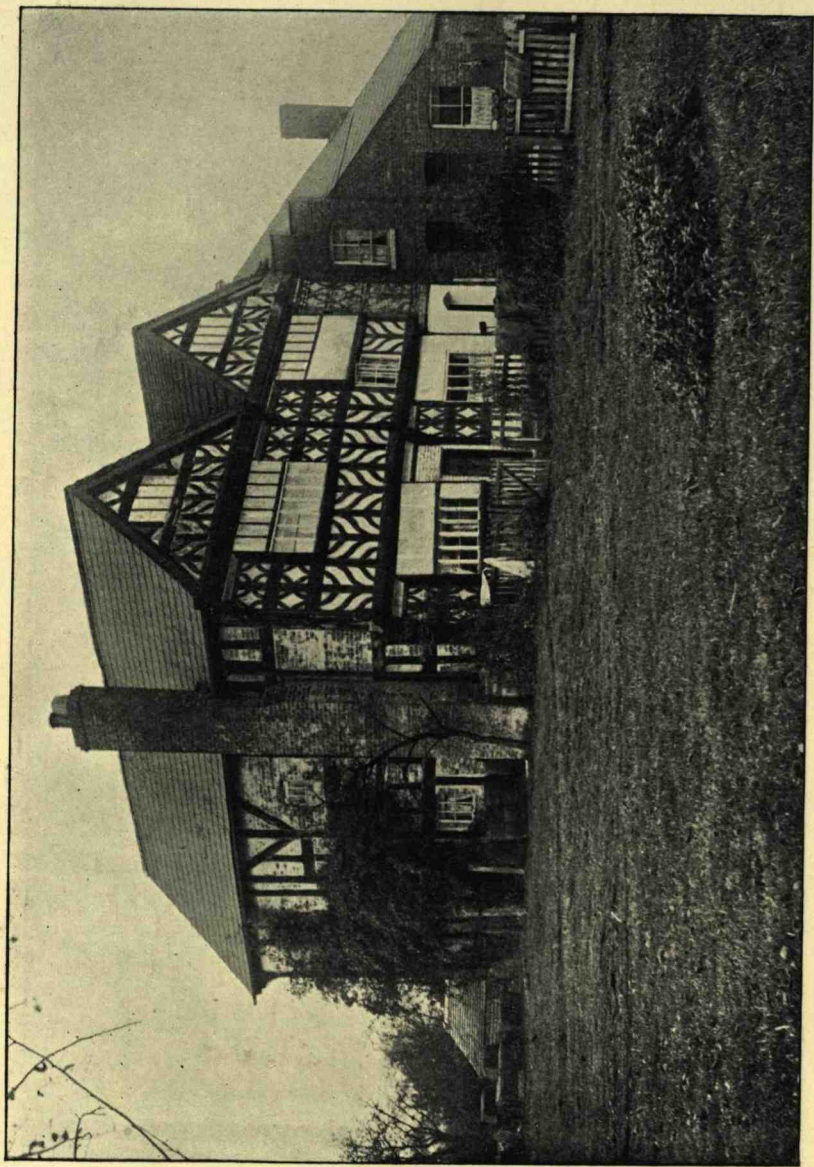


HOLFORD HALL, FROM THE EAST



HOLFORD HALL, FROM THE SOUTH-EAST

COMMUNICATIONS

HOLFORD HALL

Communicated by Arthur Wolfgang

HOLFORD HALL was built in the reign of Charles I. by Dame Mary Cholmondeley, widow of Sir Hugh Cholmondeley and heiress of Christopher Holford.

The view showing the moat and bridge is taken from the east. There is a small house to be seen in this view to the left of the hall—part of this has been a chapel.

Owing to a large chemical company having bought the estate and hall, it is expected, and has already been announced in the Manchester papers, that the old hall will very shortly be pulled down.

The other view was taken from the south-east.

Holford Hall is situated about half a mile from Plumbley Station, C.L.C. Railway, near Knutsford.