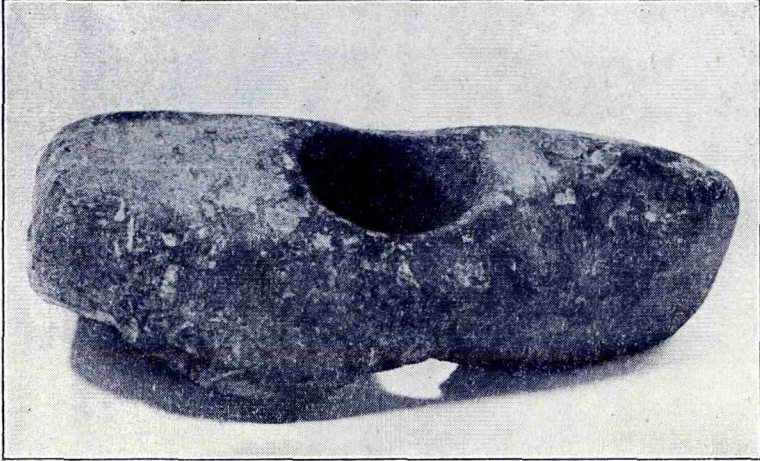


COMMUNICATIONS

STONE AXE-HAMMER FOUND AT ALTCAR, 1949



THE perforated stone axe-hammer shown in the accompanying photograph was discovered in November 1949, during ploughing in a field known as "Robinson's Corner" on the Hill House Farm, Great Altcar, Lancashire. It was purchased by J. W. Foley, Esq., and presented by him to the Liverpool City Museum. The Geological Department of the Museum have identified the material as coal-measure shale, which may well be of local origin. The implement measures approximately 7 inches in length, $3\frac{1}{2}$ inches in breadth and 2 inches in thickness, and weighs $2\frac{3}{4}$ lbs. It has suffered some damage at one side, possibly from the ploughshare, on one or more occasions, and this may account for the fact that the perforation is not now central to the width. In the absence of further knowledge one can only wonder whether it may have been used as a hoe by some local Bronze Age cultivator. Enquiries are being made regarding reports of previous unrecorded finds of stone implements in this area.

F. A. BAILEY